

JVC



SURROUND SOUND HEADPHONE ADAPTOR SURROUNDKLANG-KOPFHÖRERADAPTER ADAPTATEUR DE SON SURROUND POUR CASQUE D'ÉCOUTE

SU-DH1-E



INSTRUCTIONS BEDIENUNGSANLEITUNG MANUEL D'INSTRUCTIONS



JVC

English

“SOME DO'S AND DON'TS ON THE SAFE USE OF EQUIPMENT”

This equipment has been designed and manufactured to meet international safety standards but, like any electrical equipment, care must be taken if you are to obtain the best results and safety is to be assured.

- Do** read the operating instructions before you attempt to use the equipment.
- Do** ensure that all electrical connections (including the mains plug, extension leads and inter-connections between pieces of equipment) are properly made and in accordance with the manufacturer's instructions. Switch off and withdraw the mains plug when making or changing connections.
- Do** consult your dealer if you are ever in doubt about the installation or operation or safety of your equipment.
- Do** be careful with glass panels or doors on equipment.
- DON'T** continue to operate the equipment if you are in any doubt about it working normally, or if it is damaged in any way—switch off—withdraw the mains plug and consult your dealer.
- DON'T** remove any fixed cover as this may expose dangerous voltages.
- DON'T** leave equipment switched on when it is unattended unless it is specifically stated that it is designed for unattended operation or has a standby mode. Switch off using the switch on the equipment and make sure that your family know how to do this. Special arrangements may need to be made for infirm or handicapped people.
- DON'T** use equipment such as personal stereos or radios so that you are distracted from the requirements of road safety. It is illegal to watch television when driving.
- DON'T** listen to headphones at high volume as such use can permanently damage your hearing.
- DON'T** obstruct the ventilation of the equipment, for example with curtains or on soft furnishings. Overheating will cause damage and shorten the life of the equipment.
- DON'T** use makeshift stands and NEVER fix legs with wood screws. To ensure complete safety always fit the fixing screws supplied according to the instructions.
- DON'T** allow electrical equipment to be exposed to rain or moisture.

ABOVE ALL
NEVER let anyone especially children push anything into holes, slots or any other opening in the case. This could result in a fatal electrical shock.
NEVER guess or make changes with electrical equipment of any kind, it is better to be safe than sorry!

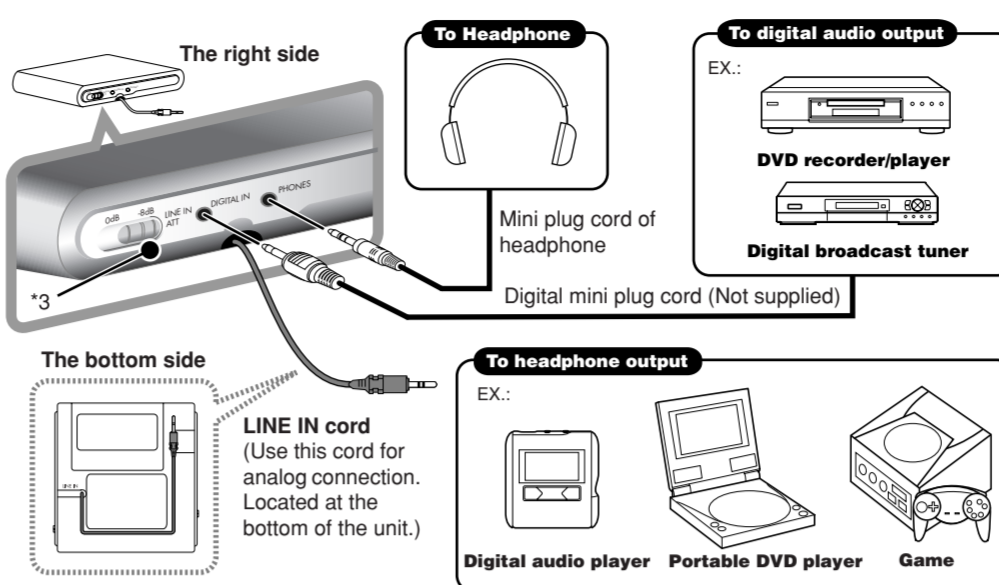
For your safety...

- Never use this unit when driving a car, motor cycle, or bicycle. This could result in an accident.
- Be careful not to turn the sound volume up too high when using the headphones. Your hearing can be damaged by listening to sounds at excessive volume for long periods.
- Do not disassemble or modify this unit.
- Do not allow inflammables, water or metallic objects to enter this unit.

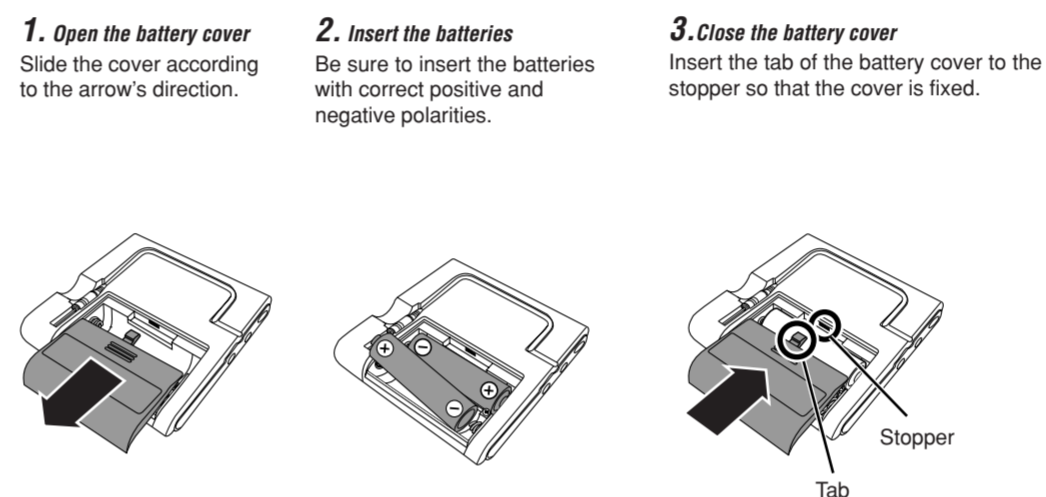
About batteries...

- Misuse of battery could result in leakage. This could cause a fire or explosion. To prevent this, pay special attention to the following points:
- Be sure to insert the battery with correct positive and negative polarities.
 - Do not heat, disassemble or short-circuit battery and never dispose of battery by throwing them in a fire.
 - Read the caution displayed on the battery when in use.

CONNECTION



BATTERY INSERTION



- Supplied batteries are for your initial use.
- The use of manganese batteries causes the battery life to end faster. When you use this unit for a long time, please use alkaline batteries.
- The POWER indicator flashes when the battery life comes to its end. In this case, replace the batteries.

About Digital Surround

Dolby Headphone
Dolby Headphone is a virtual headphone technology developed by Dolby Laboratories. Reproduces the surround system of the Dolby Digital, DTS, MPEG-2 AAC and the sound decoded by Dolby Pro Logic II into the 2 channel of the stereo headphones.

Dolby Digital^{*1}
Used to reproduce multichannel soundtracks of the software encoded with Dolby Digital.

Dolby Pro Logic II^{*1}
Dolby Pro Logic II has a newly developed multichannel playback format to decode all 2 channel sources — stereo source and Dolby Surround encoded source — into a 5.1 channel.
Dolby Pro Logic II has two modes—Movie mode and Music mode:
• Pro Logic II Movie (MOVIE)
• Pro Logic II Music (MUSIC)
Suitable for reproduction of the software encoded with Dolby Surround.
Suitable for reproduction of any 2 channel stereo music sources.

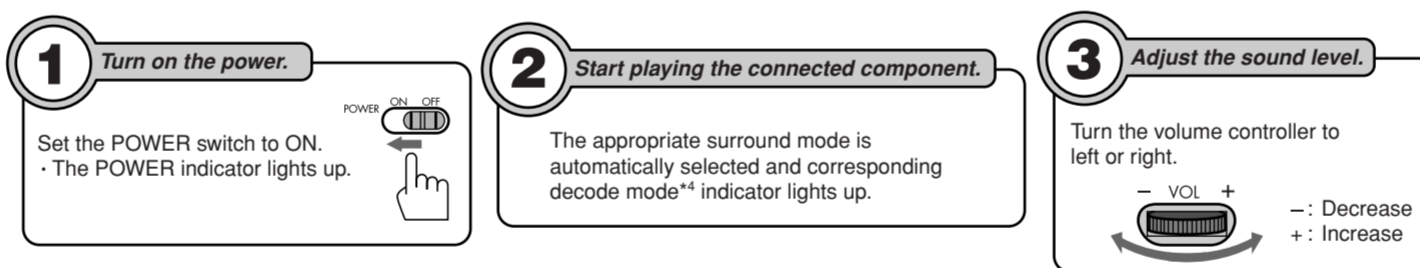
DTS Digital Surround^{*2}
Used to reproduce multichannel soundtracks of the software encoded with DTS Digital Surround.
DTS Digital Surround (DTS) is another discrete multichannel digital audio format available on CD and DVD software.

MPEG-2 AAC
MPEG-2 AAC is a surround format developed by MPEG (Moving Picture Experts Group). MPEG-2 AAC can reproduce the sound in 5.1 channel at the maximum.

*1 Manufactured under license from Dolby Laboratories. "Dolby", "Pro Logic", "AAC logo", and the double-D symbol are trademarks of Dolby Laboratories.

*2 "DTS" and "DTS VIRTUAL" are registered trademarks of Digital Theater Systems, Inc.

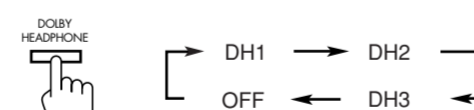
OPERATIONS



4 Select the mode of Dolby Headphone and Dolby Pro Logic II.

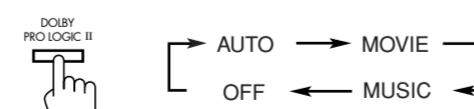
Press the DOLBY HEADPHONE button and the DOLBY PRO LOGIC II button repeatedly to select the surround mode of each function.

Dolby Headphone mode



- DH1:** Reproduces the sound with less reverberation like a mixing studio.
- DH2:** Reproduces the sound with suitable reverberation like a usual listening room.
- DH3:** Reproduces the sound having atmosphere like a mini theatre or concert hall and so on.
- OFF:** All the indicators including the Dolby Pro Logic II mode indicator go off and the unit reproduces the sound in stereo.

Dolby Pro Logic II mode



- AUTO:** The unit automatically selects MOVIE or MUSIC in compliance with the input signal.
• MOVIE is selected when the playing source is digital input 2 channel DVD or analog input.
• MUSIC is selected when the playing source is digital input CD or MD.
 - MOVIE:** Suitable for reproduction of the software encoded with Dolby Surround.
 - MUSIC:** Suitable for reproduction of any 2 channel stereo music source.
 - OFF:** No indicator lights up.
- When AUTO is selected, the AUTO indicator and the MOVIE or the MUSIC indicator light up.
 - You cannot use Dolby Pro Logic II mode when the Dolby Headphone is not activated.
 - Dolby Pro Logic II mode cannot be used for music source encoded DTS, and multichannel music source.

TROUBLESHOOTING

PROBLEM	POSSIBLE CAUSE	SOLUTION
Power does not come on.	The batteries are exhausted.	Replace the batteries.
No sound.	The batteries are exhausted. The connected component is not being played back. Headphone's volume level is set to low. The volume level of the connected component is set to low. An audio format which cannot be played back through this unit is being input. The playing component is not outputting the surround signal.	Replace the batteries. Start playing the connected component. Increase the headphone's volume. Increase the volume level of the connected component. Check the audio format.
Noise is heard from the analog connected component.	The LINE IN ATT switch is set to "0dB." The volume level of the connected component is set to high.	Set the LINE IN ATT switch to "-8dB." Decrease the volume level of the connected component.
The sound from analog connected component is quiet.	The LINE IN ATT switch is set to "-8dB."	Set the LINE IN ATT switch to "0dB."
Cannot get the surround effect.	The Dolby Headphone mode is set to OFF. Cannot activate the Dolby Pro Logic II mode.	Set the Dolby Headphone mode to DH1, DH2 or DH3. Set the Dolby Headphone mode to DH1, DH2 or DH3.
The sound from digital connected component is not being played back.	The music source encoded DTS or multichannel music source is being played back.	Dolby Pro Logic II mode cannot be used for music source encoded DTS and multichannel music source.
The POWER indicator is flashing.	The batteries are exhausted.	Replace the batteries.

SPECIFICATIONS

Playable format:	Dolby Digital (Dolby Surround EX), Dolby Pro Logic II, DTS (DTS-ES 6.1 ch), MPEG-2 AAC, PCM (Fs=44.1kHz, 48kHz)
Surround function:	Dolby Headphone (DH1/DH2/DH3), Dolby Pro Logic II (AUTO/MOVIE/MUSIC)
Input terminals:	Optical digital signal mini jack x 1, LINE IN signal cord with Gold plated stereo mini plug (ø 3.5mm) x 1
Headphone output:	Stereo mini jack x 1
Power requirements:	Alkaline AA battery (DC 1.5V) x 2
Battery life:	approx. 10hours (using Alkaline AA battery), approx. 2.5hours (using Manganese AA battery)
Dimensions:	82mm x 20mm x 86mm (W/H/D)
Mass:	approx. 99g (include Manganese AA battery)
Accessories:	Manganese AA battery (R6P) x 2 (for initial use), Carrying pouch x 1, Dual plug adaptor x 1

Design and specifications subject to change without notice.

Português

Informações para os Utilizadores sobre a Eliminação de Equipamento Antigo
[Apenas para a União Europeia]
Este símbolo indica que o produto com este símbolo não deve ser eliminado como um resíduo doméstico geral. Se pretender eliminar este equipamento, não utilize o caixote do lixo normal! Existe um sistema de recolha separado para estes produtos.

Español

Información para los usuarios sobre la eliminación de equipos usados
[Sólo Unión Europea]
Este símbolo indica que el producto que lo lleva no debe desecharse con la basura doméstica general. Si desea desechar este equipo, ¡no utilice el cubo de basura ordinario! Existe un sistema de recogida especial para estos productos.

Nederlands

Informatie voor gebruikers over het weggoien van oude apparatuur
[Alleen Europese Unie]
Dit symbool geeft aan dat het product met dit symbool niet bij het huishoudelijk afval mag worden gegooid. Gooi dit apparaat niet in de normale vuilnisbak! Er is een specifiek inzamelingsstelsel voor deze producten.

Italiano

Informazioni per gli utenti sullo smaltimento delle apparecchiature obsolete
[Solo per l'Unione Europea]
Questo simbolo indica che il prodotto a cui è relativo non deve essere smaltito tra i rifiuti domestici generici. Qualora si desidera smaltire questo apparecchio, non utilizzare una normale pattumiera! Esiste un sistema di raccolta separato per questi prodotti.

AAC Patent marking/AAC Patentkennzeichnung/Marque de licence AAC
Pat. 5,848,391; 5,291,557; 5,451,954; 5,400,433; 5,222,189; 5,357,594; 5,752,225; 5,394,473; 5,583,962; 5,274,740; 5,633,981; 5,297,236; 4,914,701; 5,235,671; 07/640,550; 5,579,430; 08/678,666; 98/03037; 97/02875; 97/02874; 98/03036; 5,227,788; 5,285,498; 5,481,614; 5,592,584; 5,781,888; 08/039,478; 08/211,547; 5,703,999; 08/577,046; 08/894,844; 5,299,238; 5,299,239; 5,299,240; 5,197,087; 5,490,170; 5,264,846; 5,268,685; 5,375,189; 5,581,654; 5,548,574; 5,717,821

Printed in China
LNT0056-001A

© 2006 Victor Company of Japan, Limited

English

Information for Users on Disposal of Old Equipment
[European Union only]
This symbol indicates that the product with this symbol should not be disposed as general household waste. If you want to dispose of this equipment, please do not use the ordinary dust bin! There is a separate collection system for these products.

Deutsch

Benutzerinformationen zur Entsorgung alter Geräte
[Nur Europäische Union]
Dieses Symbol zeigt an, dass das damit gekennzeichnete Produkt nicht als normaler Haushaltsabfall entsorgt werden soll. Wenn Sie dieses Gerät entsorgen möchten, werfen Sie es nicht in die normale Mülltonne! Für Produkte dieser Art gibt es ein getrenntes Sammelsystem.

Français

Informations relatives à l'élimination des appareils usagés, à l'intention des utilisateurs
[Union européenne uniquement]
Lorsque ce symbole figure sur un produit, cela signifie qu'il ne doit pas être éliminé en tant que déchet ménager. Si vous souhaitez éliminer cet appareil, ne le jetez pas dans votre poubelle ! Il existe un système de récupération spécifique pour ces produits.